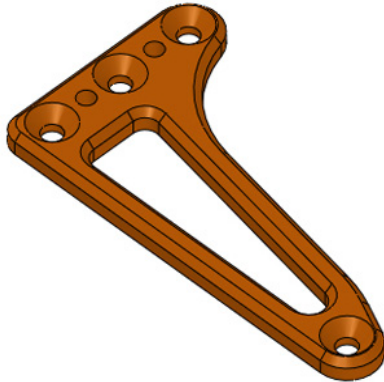
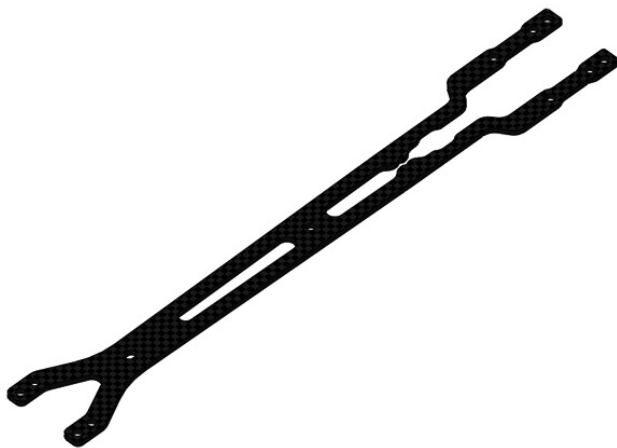


**ZT1010 ALU Floating Servo Holder Orange
(for XRAY T4 '17&' 18)**


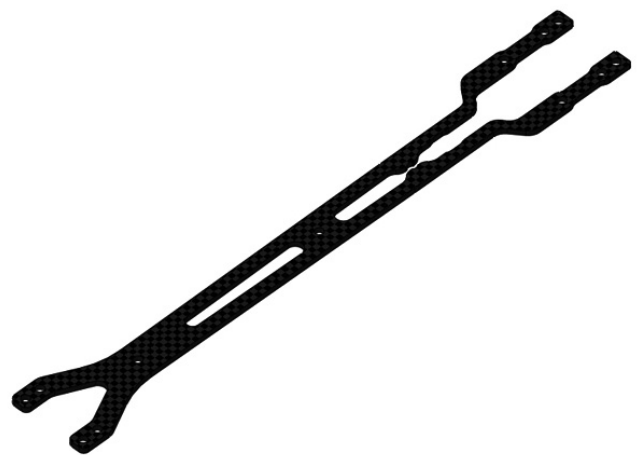
This product is a floating servo holder for XRAY T4 '17' 18.
 7075T6 is used for the material of this product.
 The ambiguity at the beginning of the steering operation disappears
 and it becomes sharp handling. The weight is about 5.4 g.
 The color of the alumite is orange.

**ZT1010 ALU Floating Servo Holder Black
(for XRAY T4 '17&' 18)**


This product is a floating servo holder for XRAY T4 '17' 18.
 7075T6 is used for the material of this product.
 The ambiguity at the beginning of the steering operation disappears
 and it becomes sharp handling. The weight is about 5.4 g.
 The color of the alumite is black.

ZT1012 Graphite Upper Deck 1.65mm (for XRAY T4 '17)


This product is domestically produced carbon upper deck for XRAY T4 '17.
 By using it on the high grip road surface, the chassis roll is relatively increased
 and the operation becomes mild.
 The outer shape is the same shape as genuine. The thickness is 1.65 mm.
 In order to prioritize strength, LAYSHAFT front fixing screw mounting hole was
 eliminated.

ZT1013 Graphite Upper Deck 1.65mm (for XRAY T4 '18)


This product is domestically produced carbon upper deck for XRAY T4 '18.
 By using it on the high grip road surface, the chassis roll is relatively increased
 and the operation becomes mild.
 The outer shape is the same shape as genuine. The thickness is 1.65 mm.

JAN	PartNumber	PartName	Price(JPY)	QTY
4580012610108	ZT1010	ALU Floating Servo Holder Orange (for XRAY T4 '17&' 18)	2000	
4580012610115	ZT1011	ALU Floating Servo Holder Black (for XRAY T4 '17&' 18)	2000	
4580012610122	ZT1012	Graphite Upper Deck 1.65mm (for XRAY T4 '17)	3000	
4580012610139	ZT1013	Graphite Upper Deck 1.65mm (for XRAY T4 '18)	3000	

 Shop name